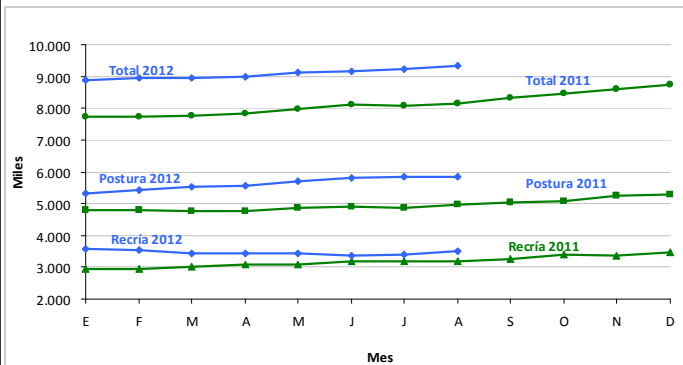
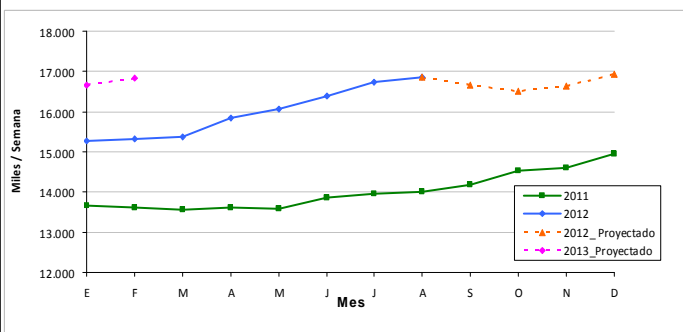


EXISTENCIAS DE REPRODUCTORAS PESADAS 2011 - 2012



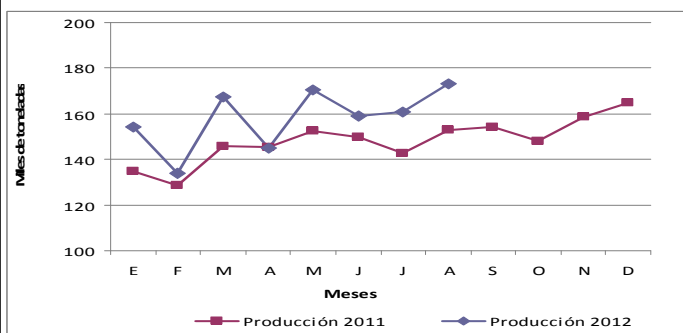
MES	RECRIA (en miles)			POSTURA (en miles)			TOTAL (en miles)		
	2011	2012	% 12/11	2011	2012	% 12/11	2011	2012	% 12/11
E	2.935	3.560	21,3	4.809	5.322	10,7	7.744	8.882	14,7
F	2.941	3.530	20,0	4.796	5.410	12,8	7.737	8.941	15,6
M	3.011	3.420	13,6	4.767	5.526	15,9	7.778	8.946	15,0
A	3.086	3.427	11,0	4.743	5.568	17,4	7.829	8.995	14,9
M	3.099	3.432	10,7	4.880	5.710	17,0	7.979	9.142	14,6
J	3.190	3.373	5,7	4.911	5.796	18,0	8.101	9.169	13,2
J	3.199	3.390	6,0	4.878	5.845	19,8	8.077	9.234	14,3
A	3.195	3.491	9,3	4.956	5.831	17,7	8.151	9.322	14,4
S	3.275			5.047			8.323		
O	3.382			5.083			8.465		
N	3.365			5.232			8.597		
D	3.459			5.280			8.740		

PRODUCCIÓN DE POLLITOS BB PARRILLEROS 2011 - 2012 - 2013 (miles/semana)



MES	BB (cant. promedio semanal en miles)				
	2011	2012	% 12/11	2013	% 13/12
E	13.668	15.282	11,8	16.650	9,0
F	13.613	15.318	12,5	16.847	10,0
M	13.560	15.366	13,3		
A	13.613	15.834	16,3		
M	13.594	16.065	18,2		
J	13.856	16.377	18,2		
J	13.970	16.743	19,8		
A	14.009	16.862	20,4		
S	14.191	16.654	17,4		
O	14.534	16.503	13,5		
N	14.607	16.641	13,9		
D	14.947	16.946	13,4		

PRODUCCIÓN DE CARNE AVIAR



FAENA DE AVES

AÑO MES	2011	2012	Dif 2012/11
	miles de cabezas		%
E	52.858	61.458	16
F	50.784	53.581	6
M	56.184	65.812	17
A	55.029	55.335	1
M	57.888	63.748	10
J	57.167	59.922	5
J	54.834	60.645	11
A	58.887	65.247	11
S	58.373		
O	56.259		
N	60.933		
D	63.822		
Subt. Ene - Ago	443.632	485.748	9
Total	683.019	485.748	

EXPORTACIONES DE CARNE AVIAR Y SUBPRODUCTOS



IMPORTACIONES DE CARNE AVIAR Y SUBPRODUCTOS

